

Ferrybox

Gothenburg 16/17 03 2010

Glenn Nolan

Guy Westbrook

Sheena Fennell

Micheal Roper

Kieran Adlum

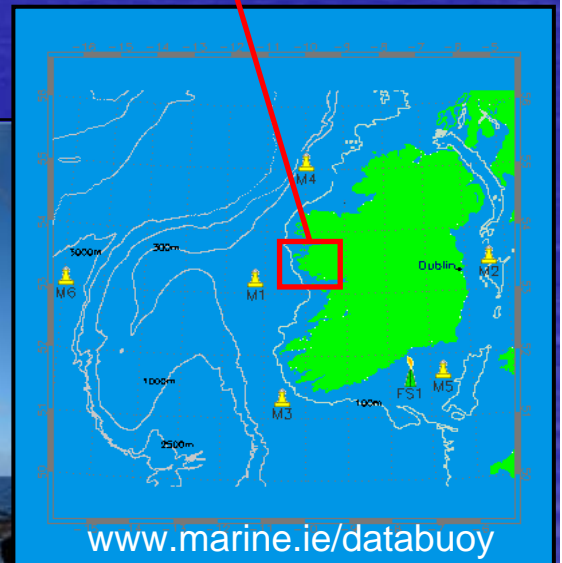
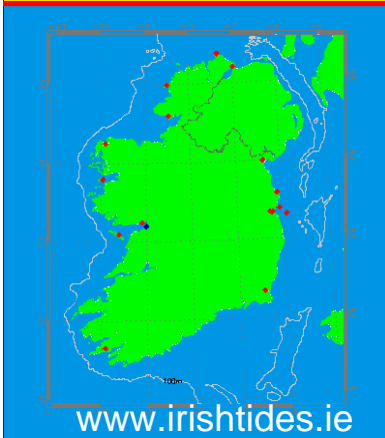
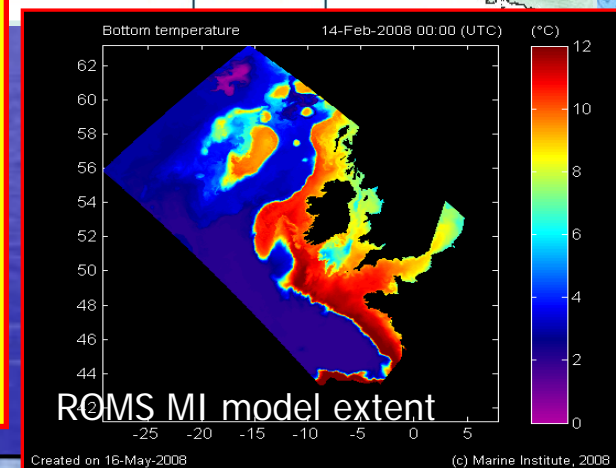
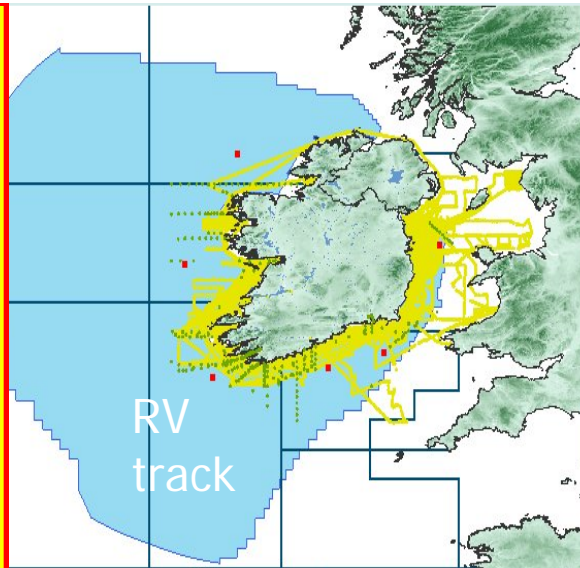
Kieran Lyons

Damien Glynn

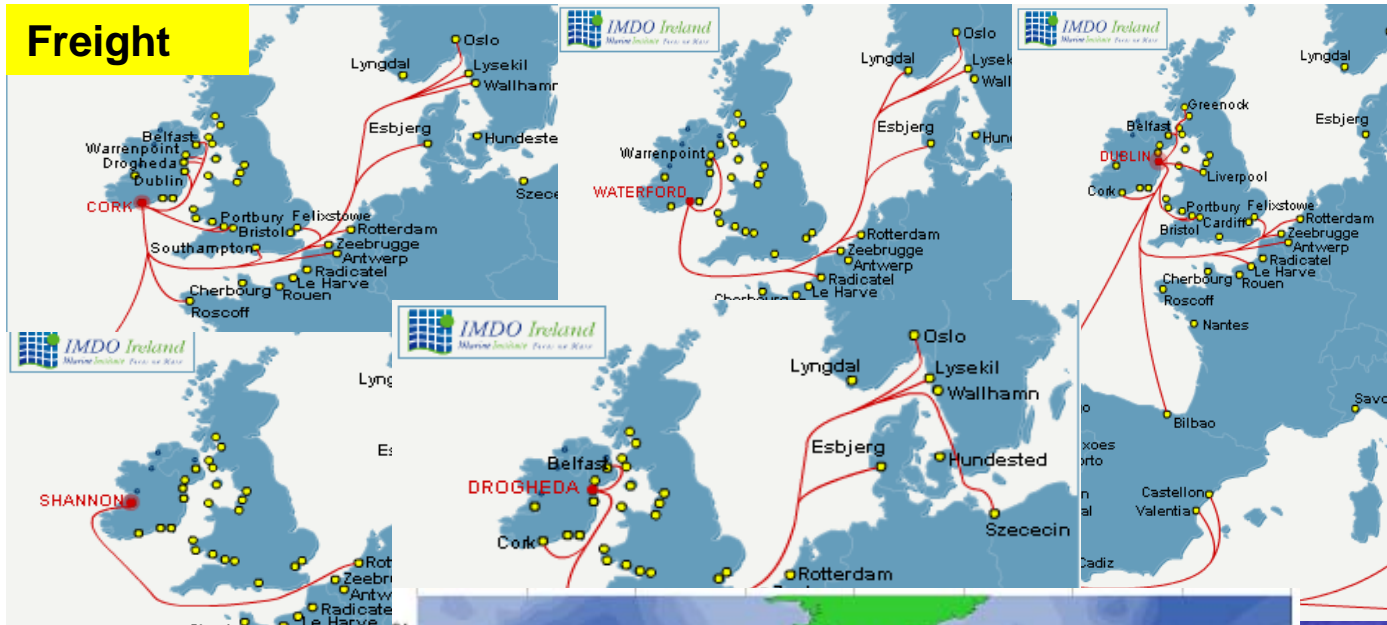


Main elements:

- Regional operational model (ROMS)
- RV track / CTD
- Weather buoy locations (hourly data - complete 2004)
- Tide gauge network (15 minute/ hourly data 2003-2013! 40 nodes)
- Inshore buoy observatories (new in 2008, 20 minute data)
- Monitoring (various data reporting rates)
- Argo floats
- Glider (still early days)



Freight



Ro Ro



Could we increase coverage using repeat VOS – suspect open door

- Commercial freight
- Ro/Ro
- Science
- Monitoring

Standard IRL ICES sections (yellow)

XBT/CPR line (Shannon-Reykjavik)

3/17/2010

Extensive RV track





3/17/2010

Currently we have atmospheric pressure data coming in

Next step is to reinstate sea water temperature

Create a real time web page (Stenna are interested in this)

Add additional sensors

Thank you

Special thank you to SHMI for passing over the equipment with the Ferry when it was re tasked to Irish waters.



3/17/2010

8